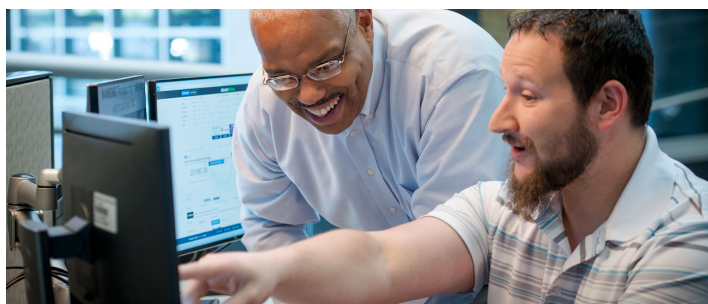


BUSINESS, ASSOCIATE OF ARTS



All Campuses

1BUSINESS

Code	Title	Credits
Transfer Path		
18 total semester credit hours (SCH) with at least 12 SCH in any combination of ACCT, BCIS, BUSI, ECON, or MARA.		12
Choose at least one of the following:		
BUSI 1301	Business Principles	
BUSI 2305	Business Statistics	
ECON 2302	Principles of Microeconomics	
ACCT 2302	Principles of Managerial Accounting	
MARA 2401	Introduction to Ships and Shipping	
The remaining hours will be selected to meet the student's specific transfer institution requirements.		6
Total Credits		18

Core Curriculum

Core Curriculum: 42 SCH of Core courses including EDUC 1100 Learning Framework/PSYC 1100 Learning Framework.

Code	Title	Credits
Communications (010)		
Select two of the following courses for 6 SCH:		6
ENGL 1301	Composition I	
ENGL 1302	Composition II	
ENGL 2311	Technical and Business Writing	
Mathematics (020)		
If you select a 4 SCH MATH course, the overflow hour may be accounted for in the Component Area Option of the Core or in the Transfer Path.		
Select one of the following courses for 3 SCH:		3
MATH 1314	College Algebra	
MATH 1316	Plane Trigonometry	
MATH 1324	Mathematics for Business and Social Sciences ¹	
MATH 1325	Calculus for Business and Social Sciences ¹	
MATH 1332	Contemporary Mathematics (Quantitative Reasoning) ¹	
MATH 1342	Elementary Statistical Methods (Statistics)	
MATH 2318	Linear Algebra	

MATH 2320	Differential Equations
MATH 2412	Pre-Calculus Math
MATH 2413	Calculus I
MATH 2414	Calculus II

Life and Physical Science (030)

Labs for the sciences courses may be accounted for in the Component Area Option.

Select two of the following courses for 6 SCH: ²		6
BIOL 1306	Biology for Science Majors I (lecture)	
BIOL 1307	Biology for Science Majors II (lecture)	
BIOL 1308	Biology for Non-Science Majors I (lecture) ³	
BIOL 1309	Biology for Non-Science Majors II (lecture) ³	
BIOL 2301	Anatomy and Physiology I (Lecture) ⁴	
BIOL 2302	Anatomy and Physiology II (Lecture) ⁴	
CHEM 1305	Introductory Chemistry I (lecture) ³	
CHEM 1311	General Chemistry I (lecture)	
CHEM 1312	General Chemistry II (lecture)	
GEOL 1301	Earth Sciences for Non-Science Majors I (lecture) ³	
GEOL 1303	Physical Geology (lecture)	
GEOL 1304	Historical Geology (lecture)	
PHYS 1301	College Physics I (lecture)	
PHYS 1302	College Physics II (lecture)	
PHYS 2325	University Physics I (lecture)	
PHYS 2326	University Physics II (lecture)	

Language, Philosophy, and Culture (Humanities) (040)

Select one of the following courses for 3 SCH:		3
ENGL 2322	British Literature I	
ENGL 2323	British Literature II	
ENGL 2327	American Literature I	
ENGL 2328	American Literature II	
ENGL 2332	World Literature I	
ENGL 2333	World Literature II	
ENGL 2341	Forms of Literature: Literature and Film	
ENGL 2351	Mexican American Literature	
GEOG 1302	Human Geography	
HIST 2321	World Civilization I	
HIST 2322	World Civilization II	
HUMA 1301	Introduction to the Humanities I	
PHIL 1301	Introduction to Philosophy	
PHIL 2306	Introduction to Ethics	

Creative Arts (Fine Arts) (050)

Select one of the following courses for 3 SCH:		3
ARTS 1301	Art Appreciation	
ARTS 1303	Art History I (Prehistoric to the 14th century)	
ARTS 1304	Art History II (14th century to the present)	
DANC 1305	World Dance	
DANC 2303	Dance Appreciation	
DRAM 1310	Introduction to Theater	
DRAM 2366	Introduction to Cinema: Film Appreciation I	
MUSI 1306	Music Appreciation	
MUSI 1307	Music Literature	
MUSI 1310	American Music	

American History (060)

Select two of the following courses for 6 SCH:	6
HIST 1301 United States History I	
HIST 1302 United States History II	
HIST 2301 Texas History	
HIST 2327 Mexican American History I	
HIST 2328 Mexican American History II	
HIST 2381 African American History I	
HIST 2382 African American History II	

Government/Political Science (070)

Select two of the following courses for 6 SCH:	6
GOVT 2305 Federal Government (Federal Constitution and Topics) ⁵	
GOVT 2306 Texas Government (Texas Constitution and Topics) ⁵	

Social and Behavioral Sciences (080)

Select one of the following courses for 3 SCH:	3
ANTH 2302 Introduction to Archaeology	
ANTH 2346 General Anthropology	
ANTH 2351 Cultural Anthropology	
ECON 2301 Principles of Macroeconomics	
ECON 2302 Principles of Microeconomics	
GEOG 1303 World Regional Geography	
GOVT 2304 Introduction to Political Science	
HIST 2311 Western Civilization I	
HIST 2312 Western Civilization II	
PSYC 2301 General Psychology	
SOCI 1301 Introduction to Sociology	
SOCI 2319 Minority Studies	

Component Area Option (090)

The following courses as well as courses not previously used from the other eight areas of the Core may be used to fulfill the Component Area Option requirement.

Select from the following courses for 6 SCH:	6
BIOL 1106 Biology for Science Majors I (lab)	
BIOL 1107 Biology for Science Majors II (lab)	
BIOL 1108 Biology for Non-Science Majors I (lab)	
BIOL 1109 Biology for Non-Science Majors II (lab)	
BIOL 2101 Anatomy and Physiology I (Lab)	
BIOL 2102 Anatomy and Physiology II (Lab)	
CHEM 1105 Introductory Chemistry I (lab)	
CHEM 1111 General Chemistry I (lab)	
CHEM 1112 General Chemistry II (lab)	
CHIN 1411 Beginning Chinese I	
CHIN 1412 Beginning Chinese II	
EDUC 1100 Learning Framework or PSYC 110 Learning Framework	
FREN 1411 Beginning French I	
FREN 1412 Beginning French II	
GEOL 1101 Earth Sciences for Non-Science Majors I (lab)	
GEOL 1103 Physical Geology (lab)	
GEOL 1104 Historical Geology (lab)	
GERM 1411 Beginning German I	

GERM 1412 Beginning German II	
GOVT 2107 Federal and Texas Constitutions	
PHED 1164 Introduction to Physical Fitness and Wellness	
PHYS 1101 College Physics I (lab)	
PHYS 1102 College Physics II (lab)	
PHYS 2125 University Physics I (lab)	
PHYS 2126 University Physics II (lab)	
SGNL 1401 Beginning American Sign Language I	
SGNL 1402 Beginning American Sign Language II	
SPAN 1411 Beginning Spanish I	
SPAN 1412 Beginning Spanish II	
SPCH 1311 Introduction to Speech Communication	
SPCH 1315 Public Speaking	
SPCH 1318 Interpersonal Communication	
SPCH 1321 Business and Professional Speech	

Total Credits	42
----------------------	-----------

- MATH 1324 Mathematics for Business and Social Sciences, MATH 1325 Calculus for Business and Social Sciences, and MATH 1332 Contemporary Mathematics (Quantitative Reasoning) are not recommended for students pursuing mathematics or science.
- Students must be simultaneously co-enrolled in the co-requisite science lab.
- BIOL 1308 Biology for Non-Science Majors I (lecture), BIOL 1309 Biology for Non-Science Majors II (lecture) and CHEM 1305 Introductory Chemistry I (lecture), and GEOL 1301 Earth Sciences for Non-Science Majors I (lecture) do not meet the requirements for science majors.
- BIOL 2301 Anatomy and Physiology I (Lecture) and BIOL 2302 Anatomy and Physiology II (Lecture) are designed for allied health majors and not for academic transfer as science majors.
- Students who have taken GOVT 2301 or GOVT 2302, but not both, should check with an educational planner on how to complete the 6 SCH.

If a student successfully completes San Jacinto College's 42-hour Core Curriculum, that block of courses must be substituted for the receiving institution's Core Curriculum. The receiving institution may not require a student to take additional Core Curriculum courses to meet the requirements of the Core. Students who transfer without completing the Core Curriculum shall receive academic credit in the Core Curriculum of the receiving institution for each of the courses the student has successfully completed in the San Jacinto College Core Curriculum. Students should plan Core Curriculum courses that would meet baccalaureate degree requirements at the four-year institution.