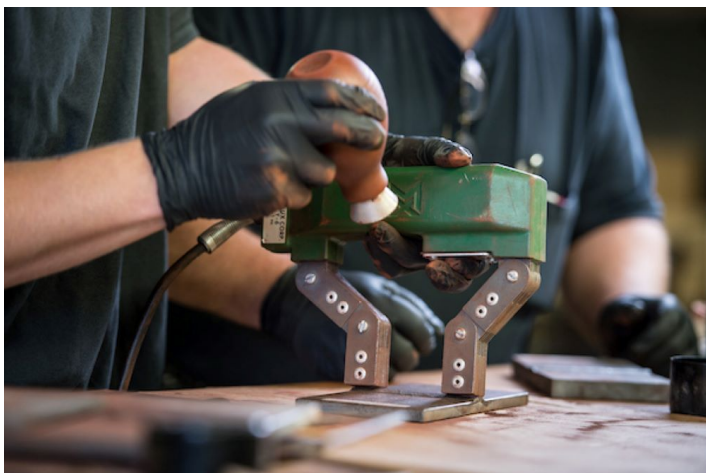


INSPECTION TECHNOLOGIES, FIXED EQUIPMENT INSPECTION TECHNOLOGY, LEVEL 2 CERTIFICATE



Information

Students pursuing the Fixed Equipment Inspection Technology Level 2 Certificate can earn the technical training necessary to begin a career in the testing, inspection, and quality fields. The second year of the Fixed Equipment program focuses on inspection of Welds, Pressure Vessels, Pressure Piping, Valves, and Advanced Metallurgical Techniques.

This degree offers classroom and lab training in:

- VT - Visual Inspection,
- MT - Magnetic Particle Testing,
- PT - Liquid Penetrant Testing,
- UT - Ultrasonic Testing, Radiographic Film Interpretation, and Corrosion,
- Weld Inspection (CWI),
- Pressure Vessel Inspection, Piping and Valve Inspection, and
- Advanced Metallurgy in conformance to the guidelines of American Society for Nondestructive Testing SNT-TC-1A (ASNT), American Petroleum Institute (API), American Welding Society (AWS), and NACE International.

Additional coursework in Standards and Codes, Metrology and Prints, and Metallurgy provides the foundations needed for the diversity and adaptability of skills needed for a successful career and advancement.

The following three courses' advanced subjects require five years' experience to sit for a certification exam. The College designed the courses for both those wanting the knowledge to be able to work to gain experience and those preparing to sit for exams.

- NDTE 2411 Welding Inspection
- NDTE 2439 Pressure Piping and Valve Inspection
- NDTE 2440 Pressure Vessel Inspection